

# High Pressure Belt Drive Centrifugal Upblast Exhaust Fans

## MODEL CBU-HP

Designed for High Static Pressure Installations

### FEATURES

- Non-Overloading Backward Inclined Aluminum Wheel
- Variable Pitch Motor Pulley for Field Adjustment
- AMCA Licensed for Sound and Air
- Emergency Disconnect Switch Standard
- Suitable for Wall Mount up through CBU-HP245MA
- ETL Listed for Over Cooking and Grease Laden Air

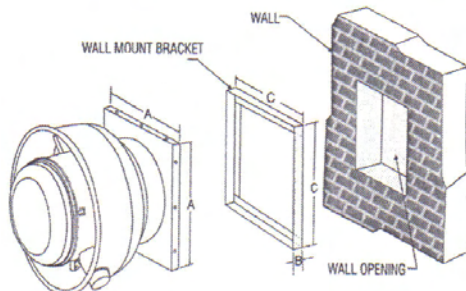


Catalog No.	Wheel Dia.	HP	Fan RPM	Tip Speed	Max BHP	Capacity (CFM) at "S.P.										Max Sones	Ship Wt.
						1/2"	3/4"	1"	1 1/2"	2"	2 1/4"	2 1/2"	2 3/4"	3"			
CBU-HP150DA	15"	1/3	1291	5323	0.36	1696	1511	1277	-	-	-	-	-	-	12.3	130	
CBU-HP150FA	15"	1/2	1474	6078	0.53	2017	1883	1710	1218	-	-	-	-	-	15.9	130	
CBU-HP150HA	15"	3/4	1685	6948	0.81	2378	2261	2142	1836	1342	-	-	-	-	20.0	140	
CBU-HP150JA	15"	1	1855	7649	1.08	2666	2557	2450	2198	1885	1674	1344	-	-	23.0	140	
CBU-HP180FA	18"	1/2	1065	5228	0.54	2567	2297	1956	-	-	-	-	-	-	10.3	150	
CBU-HP180HA	18"	3/4	1214	5959	0.78	3056	2837	2590	1889	-	-	-	-	-	13.4	160	
CBU-HP180JA	18"	1	1343	6592	1.07	3451	3273	3073	2577	1727	-	-	-	-	16.3	160	
CBU-HP180KA	18"	1-1/2	1529	7505	1.58	4010	3873	3707	3339	2874	2579	2178	-	-	22.0	180	
CBU-HP180MA	18"	2	1686	8276	2.12	4476	4351	4224	3907	3539	3337	3103	-	-	26.0	190	
CBU-HP200HA	20"	3/4	1032	5606	0.79	3505	3235	2895	-	-	-	-	-	-	13.1	165	
CBU-HP200JA	20"	1	1144	6215	1.07	3998	3754	3490	2763	-	-	-	-	-	16.2	165	
CBU-HP200KA	20"	1-1/2	1303	7508	1.57	4671	4466	4252	3756	3049	2334	-	-	-	21.0	185	
CBU-HP200MA	20"	2	1430	7768	2.10	5195	5022	4826	4423	3915	3593	3176	2394	-	25.0	195	
CBU-HP200OA	20"	3	1636	8887	3.15	6035	5888	5732	5391	5029	4815	4600	4340	4048	30.0	195	
CBU-HP245HA	24"	3/4	774	5015	0.77	4177	3692	2988	-	-	-	-	-	-	12.4	210	
CBU-HP245JA	24"	1	856	5547	1.05	4780	4397	3916	-	-	-	-	-	-	14.8	210	
CBU-HP245KA	24"	1-1/2	975	6318	1.56	5627	5319	4969	4005	-	-	-	-	-	17.1	230	
CBU-HP245MA	24"	2	1073	6953	2.05	6304	6032	5743	5028	3887	2497	-	-	-	21.0	240	
CBU-HP245OA	24"	3	1235	8002	3.17	7402	7176	6937	6414	5770	5376	4879	4127	2751	27.0	240	
CBU-HP245PA	24"	5	1468	9512	5.30	8946	8767	8576	8174	7739	7498	7225	6944	6637	38.0	280	
CBU-HP300HA	30"	3/4	520	4203	0.78	5092	4160	-	-	-	-	-	-	-	10.0	350	
CBU-HP300JA	30"	1	575	4648	1.05	5918	5217	4179	-	-	-	-	-	-	12.6	350	
CBU-HP300KA	30"	1-1/2	656	5302	1.56	7060	6530	5883	-	-	-	-	-	-	15.6	370	
CBU-HP300MA	30"	2	719	5812	2.03	7910	7462	6940	5507	-	-	-	-	-	18.0	380	
CBU-HP300OA	30"	3	830	6709	3.14	9367	9010	8614	7672	6354	5040	-	-	-	22.0	380	
CBU-HP300PA	30"	5	983	7946	5.27	11324	11038	10734	10062	9264	8807	8285	7675	6834	29.0	420	

Performance shown is for installation Type A: Free Inlet; Free Outlet. Power Ratings (BHP) do not include Drive Losses. Performance ratings do not include the effects of appurtenances in the air stream. Instructions for wall mounting included with each fan.

### CBU-HP WALL MOUNTING DETAILS

MODEL	A	C	WALL OPENING
CBU-HP150	24-3/4"	24-1/4"	20"
CBU-HP180	28"	27-1/2"	24"
CBU-HP200	28"	27-1/2"	24"
CBU-HP245	33"	32-1/2"	28"



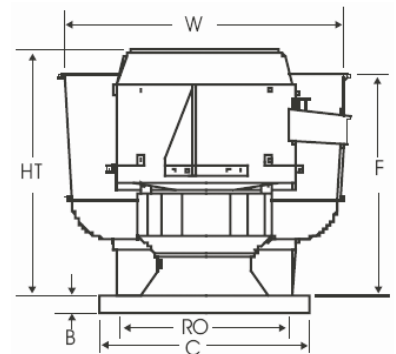
### FAN DIMENSIONS

Wheel Dia.	Catalog Number	Ht.	W	B	C	F	RO or WO
15"	CBU-HP150	28-1/4"	31-1/2"	2"	24-3/4"	24-3/4"	20"
18"	CBU-HP 180	31-1/2"	37-1/2"	2"	28"	26"	24"
20"	CBU-HP 200	31-1/2"	37-1/2"	2"	28"	26"	24"
24"	CBU-HP 245	37-1/2"	42"	2"	33"	28"	28"
30"	CBU-HP 300	39"	51-1/4"	2"	40"	33-1/8"	36"

\* Wall mount not available for 30" size

NOTES:  
50Hz motors available.

Special custom order product. Once in production, non-cancellable, non-returnable under any circumstance.



# High Pressure Belt Drive Centrifugal Upblast Exhaust Fans

## MODEL CBU-HP

### 1 Sp / 1 Ph 115/230V

EDP Number	Catalog No.	List Price
32582	CBU-HP150DA	\$2,937
32583	CBU-HP150FA	\$3,009
32585	CBU-HP150HA	\$3,101
32587	CBU-HP150JA	\$3,225
32589	CBU-HP180FA	\$3,703
32593	CBU-HP180HA	\$3,806
32595	CBU-HP180JA	\$3,946
32597	CBU-HP180KA	\$3,994
32599	CBU-HP180MA	\$4,470
32601	CBU-HP200HA	\$4,011
32603	CBU-HP200JA	\$4,155
32605	CBU-HP200KA	\$4,410
32607	CBU-HP200MA	\$4,696
32609	CBU-HP200OA	\$5,716
32613	CBU-HP245HA	\$4,597
32615	CBU-HP245JA	\$4,749
32617	CBU-HP245KA	\$5,006
32619	CBU-HP245MA	\$5,930
32621	CBU-HP245OA	\$6,482
32624	CBU-HP300HA	\$5,798
32626	CBU-HP300JA	\$6,345
32628	CBU-HP300KA	\$6,255
32632	CBU-HP300MA	\$6,798
32634	CBU-HP300OA	\$7,461

### 1 Sp / 3 Ph 208/230/460V

EDP Number	Catalog No.	List Price
32584	CBU-HP150FA	\$2,950
32586	CBU-HP150HA	\$3,009
32588	CBU-HP150JA	\$3,051
32592	CBU-HP180FA	\$3,629
32594	CBU-HP180HA	\$3,697
32596	CBU-HP180JA	\$3,743
32598	CBU-HP180KA	\$3,766
32600	CBU-HP180MA	\$4,182
32602	CBU-HP200HA	\$3,900
32604	CBU-HP200JA	\$3,946
32606	CBU-HP200KA	\$4,364
32608	CBU-HP200MA	\$4,395
32612	CBU-HP200OA	\$5,151
32614	CBU-HP245HA	\$4,481
32616	CBU-HP245JA	\$4,531
32618	CBU-HP245KA	\$4,553
32620	CBU-HP245MA	\$4,916
32622	CBU-HP245OA	\$5,029
32623	CBU-HP245PA	\$5,486
32625	CBU-HP300HA	\$5,673
32627	CBU-HP300JA	\$5,726
32629	CBU-HP300KA	\$5,753
32633	CBU-HP300MA	\$5,413
32635	CBU-HP300OA	\$6,776
32636	CBU-HP300PA	\$7,081

## Optional Accessories

### 8" Curb

EDP Number	Catalog No.	List Price
31107	PACA23.75-8	\$277
31112	PACA27-8	\$316
31115	PACA32-8	\$373
31118	PACA39-8	\$453

EDP No	Used with CBU-HP Models No.
31107	CBU-HP150DA, CBU-HP150FA, CBU-HP150HA, CBU-HP150JA
31112	CBU-HP180FA, CBU-HP180HA, CBU-HP180JA, CBU-HP180KA, CBU-HP180MA, CBU-HP200HA, CBU-HP200JA, CBU-HP200KA, CBU-HP200MA, CBU-HP200OA
31115	CBU-HP245HA, CBU-HP245JA, CBU-HP245KA, CBU-HP245MA, CBU-HP245OA, CBU-HP245PA
31118	CBU-HP300HA, CBU-HP300JA, CBU-HP300KA, CBU-HP300MA, CBU-HP300OA, CBU-HP300PA

### 12" Curb

EDP Number	Catalog No.	List Price
31108	PACA23.75-12	\$325
31113	PACA27-12	\$369
31116	PACA32-12	\$438
31119	PACA39-12	\$534

EDP No	Used with CBU-HP Models No.
31108	CBU-HP150DA, CBU-HP150FA, CBU-HP150HA, CBU-HP150JA
31113	CBU-HP180FA, CBU-HP180HA, CBU-HP180JA, CBU-HP180KA, CBU-HP180MA, CBU-HP200HA, CBU-HP200JA, CBU-HP200KA, CBU-HP200MA, CBU-HP200OA
31116	CBU-HP245HA, CBU-HP245JA, CBU-HP245KA, CBU-HP245MA, CBU-HP245OA, CBU-HP245PA
31119	CBU-HP300HA, CBU-HP300JA, CBU-HP300KA, CBU-HP300MA, CBU-HP300OA, CBU-HP300PA

### 18" High Ventilated Curb

EDP Number	Catalog No.	List Price
31109	PACA23.75-18V	\$543
31114	PACA27-18V	\$618
31117	PACA32-18V	\$733
31120	PACA39-18V	\$893

EDP No	Used with CBU-HP Models No.
31109	CBU-HP150DA, CBU-HP150FA, CBU-HP150HA, CBU-HP150JA
31114	CBU-HP180FA, CBU-HP180HA, CBU-HP180JA, CBU-HP180KA, CBU-HP180MA, CBU-HP200HA, CBU-HP200JA, CBU-HP200KA, CBU-HP200MA, CBU-HP200OA
31117	CBU-HP245HA, CBU-HP245JA, CBU-HP245KA, CBU-HP245MA, CBU-HP245OA, CBU-HP245PA
31120	CBU-HP300HA, CBU-HP300JA, CBU-HP300KA, CBU-HP300MA, CBU-HP300OA, CBU-HP300PA

### Damper Gravity

EDP Number	Catalog No.	List Price
32455	BD29A	\$218
32456	BD23.75A	\$270
32518	BD37A	\$328
32457	BD44A	\$408

EDP No	Used with CBU-HP Models No.
32455	CBU-HP150DA, CBU-HP150FA, CBU-HP150HA, CBU-HP150JA
32456	CBU-HP180FA, CBU-HP180HA, CBU-HP180JA, CBU-HP180KA, CBU-HP180MA, CBU-HP200HA, CBU-HP200JA, CBU-HP200KA, CBU-HP200MA, CBU-HP200OA
32518	CBU-HP245HA, CBU-HP245JA, CBU-HP245KA, CBU-HP245MA, CBU-HP245OA, CBU-HP245PA
32457	CBU-HP300HA, CBU-HP300JA, CBU-HP300KA, CBU-HP300MA, CBU-HP300OA, CBU-HP300PA

### Damper Motor Kit

EDP Number	Catalog No.	List Price
94283	Motor Kit 115/230V	\$283
94282	Motor Kit 460V	\$283

EDP No	Used with CBU-HP Models No.
94283	CBU-HP150DA, CBU-HP150FA, CBU-HP150HA, CBU-HP150JA
94282	CBU-HP180FA, CBU-HP180HA, CBU-HP180JA, CBU-HP180KA, CBU-HP180MA, CBU-HP200HA, CBU-HP200JA, CBU-HP200KA, CBU-HP200MA, CBU-HP200OA, CBU-HP245HA, CBU-HP245JA, CBU-HP245KA, CBU-HP245MA, CBU-HP245OA, CBU-HP245PA, CBU-HP300HA, CBU-HP300JA, CBU-HP300KA, CBU-HP300MA, CBU-HP300OA, CBU-HP300PA

### Wall Mount Damper

EDP Number	Catalog No.	List Price
32455	BD29A	\$218
32456	BD29A, BD23.75A	\$270
32518	BD37A	\$328

EDP No	Used with CBU-HP Models No.
32455	CBU-HP150DA, CBU-HP150FA, CBU-HP150HA, CBU-HP150JA
32456	CBU-HP180FA, CBU-HP180HA, CBU-HP180JA, CBU-HP180KA, CBU-HP180MA, CBU-HP200HA, CBU-HP200JA, CBU-HP200KA, CBU-HP200MA, CBU-HP200OA
32518	CBU-HP245HA, CBU-HP245JA, CBU-HP245KA, CBU-HP245MA, CBU-HP245OA, CBU-HP245PA

### Wall Grille

EDP Number	Catalog No.	List Price
32522	WG17	\$179
32523	WG20	\$239

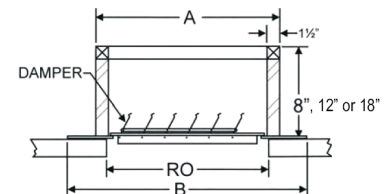
EDP No	Used with CBU-HP Models No.
32522	CBU-HP150DA, CBU-HP150FA, CBU-HP150HA, CBU-HP150JA, CBU-HP180FA, CBU-HP180HA, CBU-HP180JA, CBU-HP180KA, CBU-HP180MA, CBU-HP200HA, CBU-HP200JA, CBU-HP200KA, CBU-HP200MA, CBU-HP200OA
32523	CBU-HP245HA, CBU-HP245JA, CBU-HP245KA, CBU-HP245MA, CBU-HP245OA, CBU-HP245PA

The sound ratings shown are loudness values in fan sones at 5 ft. (1.5m) in a hemispherical free field calculated per AMCA Standard 301. Values shown are for installation Type A: Free inlet fan sone levels. Sones are given for the highest value over catalog range. Backdraft Damper not for use in kitchen exhaust applications.

**WALL MOUNT BRACKETS AVAILABLE (through CBU-HP245-MA) - CONTACT FACTORY**

### CURB DIMENSIONS

Curb Cat. No.	Ship Wt.	A Sq.	B Sq.	Roof Opening	Damper Cat. No.	Ship Wt.
PACA20	20	20"	24"	16"	BD16.75A	4679
PACA23.75	23	23.75"	27.75"	20"	BD29A	16
PACA27	28	27"	31"	24"	BD23.75A	18
PACA32	39	32"	36"	28"	BD37A	4679
PACA39	39	39"	43"	36"	BD44A	16
PACA43	45	43"	47"	40"	BD39.75A	18



### Accessories

EDP Number	Description	List Price
62000	Curb Hinge	\$150
62002	Bird Screen	\$169
62003	Grease Box	\$169

NOTE: Cannot use a Bird Screen and a Grease Box on the same fan.  
 NOTES:  
 Non-Vented Curbs Available. Consult factory.  
 Pitched and Peaked Curbs available.  
 For Pitched Roof Curb price, multiply flat roof curb price by 1.67.  
 For Peaked Roof Curb price, multiply flat roof curb price by 2.22.  
 Please specify Pitched or Peaked when ordering.

