



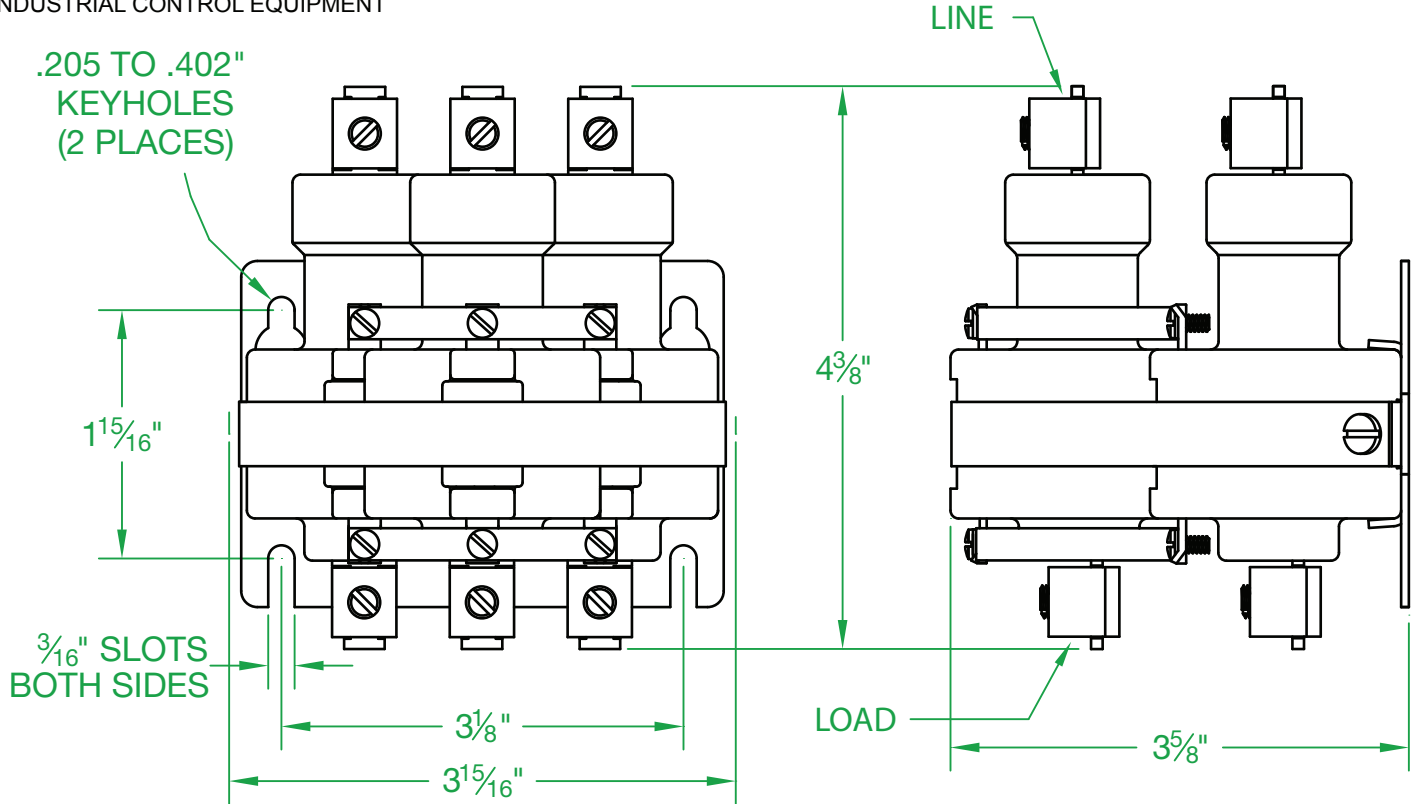
MERCURY DISPLACEMENT INDUSTRIES, INC.

INDUSTRIAL & ELECTRIC SUPPLY CO.
Phone (956) 541-3743 - Fax (956) 541-2106
(800) 880-3743



360NO-24DH-18

INDUSTRIAL CONTROL EQUIPMENT



* CONTACT RESISTANCE .002 ohms

* TEMPERATURE RANGE -35° TO +85° C

* DIELECTRIC WITHSTAND 2,500 VAC RMS

* COIL TERMINALS #6 BINDING HEAD SCREWS TORQUE TO 7 IN-LB

* OPERATE TIME 50 MILLISECONDS

* LOAD TERMINALS 2-8 A.W.G. COMPRESSION TYPE TORQUE TO 45 IN-LB

* RELEASE TIME 80 MILLISECONDS

* RATINGS:

* 3 POLE / SINGLE THROW

CONTACTS: 60 AMPS @ 480 VAC
RESISTIVE OR GEN. PURPOSE
COIL: 24 V.D.C.
CURRENT: 408mA
RESISTANCE: 59 Ω
VA: 9.9 WATTAGE: 9.9

* MAGNETICALLY ACTIVATED

* MERCURY CONTACTOR

* LIFE CYCLE ENDURANCE TESTS: U.L. 508 @ 100,00 & CSA 22.2 @ 250,000 CYCLES